



Specification Approval Sheet

Model: CR2-750mAh+PTC

Prepared By/Date	Checked By/Date	Approved By/Date

Customer Approval	Confirmation	Date

Note: 1. Kindly please sign on the above and send it back to us if the sample is approved.
2. Kindly please contact us as soon as possible if the sample isn't approved. Thanks!

Shenzhen Kunteng Co.,Ltd

Add : No.1 Factory, Oriental Hi-tech Park, Qiaoxiang Rd, Nanshan District, Shenzhen, 518053, China.

PC: 518053 Tel: 86-0755-26756070 Fax: 86-0755-26755329

Email : info@tinko.com.cn

Website: www.tinko.com.cn



CR2-750mAh+PTC Product Specification

1. Scope

This specification is suitable for the performance of the kunteg Lithium and Manganese Dioxide battery.

2. Model

CR2-750mAh+PTC

3. Reference Document

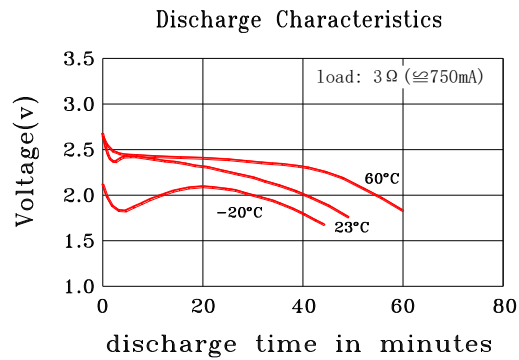
IEC60086-2: 2001 Primary batteries-Part 2: Physical and technological specifications, MOD

GB 8897.2: 2005 Primary batteries-Part 2: Physical and technological specifications

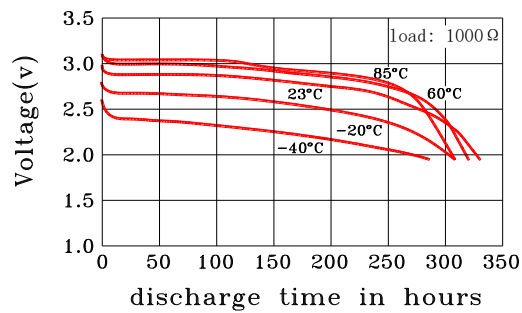
4. Specification

No.	Items	Specification	
1	Nominal Voltage	3.0 V	
2	Capacity (Discharge Current 1mA to 2.0V)	Nominal	750 mAh
		Minimum	700 mAh
3	Max. Discharge Current	Continuous	100 mA
		Pulse	400 mA
4	Discharge Cut-off Voltage	2.0 V	
5	Weight	Approx. 11 g	
6	Operating Temperature	-40 °C to 60 °C	
7	Storage Temperature	-10 °C to 40 °C	
8	Relative humidity	65±20%	
9	Period of Validity	5 years	
10	PTC		

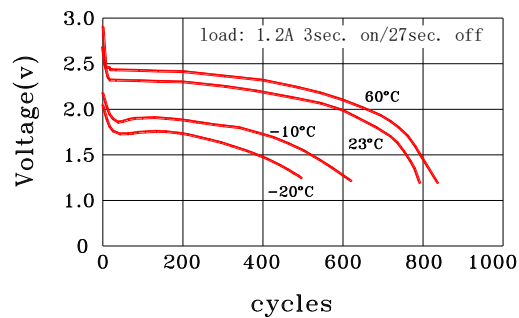
5. Test Conditions and Performance



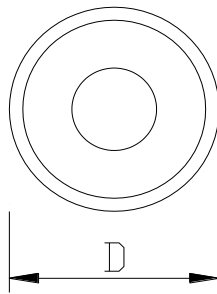
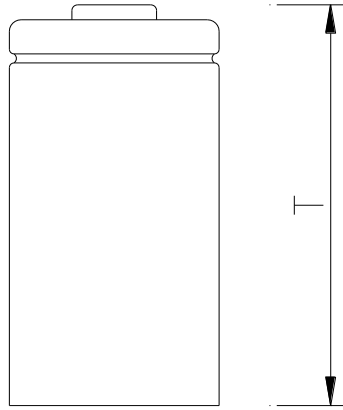
Discharge characteristics on temperature



Pulse Discharge Characteristics



6. Drawing (unit: mm)



Items	Description	Dimension
D	Diameter	16.2±0.2mm
T	Height	27.7±0.5mm

7. Cautions in use

To ensure proper use of the battery please read the manual carefully before using it.

.Handling

- Do not expose to, dispose of the battery in fire.
- Do not put the battery in a charger or equipment with wrong terminals connected.
- Avoid shorting the battery
- Avoid excessive physical shock or vibration.
- Do not disassemble or deform the battery.
- Do not immerse in water.
- Do not use the battery mixed with other different make, type, or model batteries.
- Keep out of the reach of children.

.Storage

- Store the battery in a cool, dry and well-ventilated area.

.Disposal

- Regulations vary for different countries.
- Dispose of in accordance with local regulations.

8. Note

Any other items which are not covered in this specification shall be agreed by both parties.